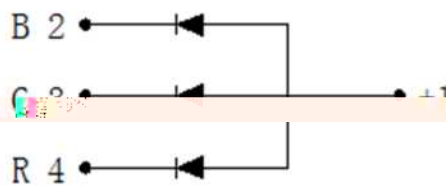
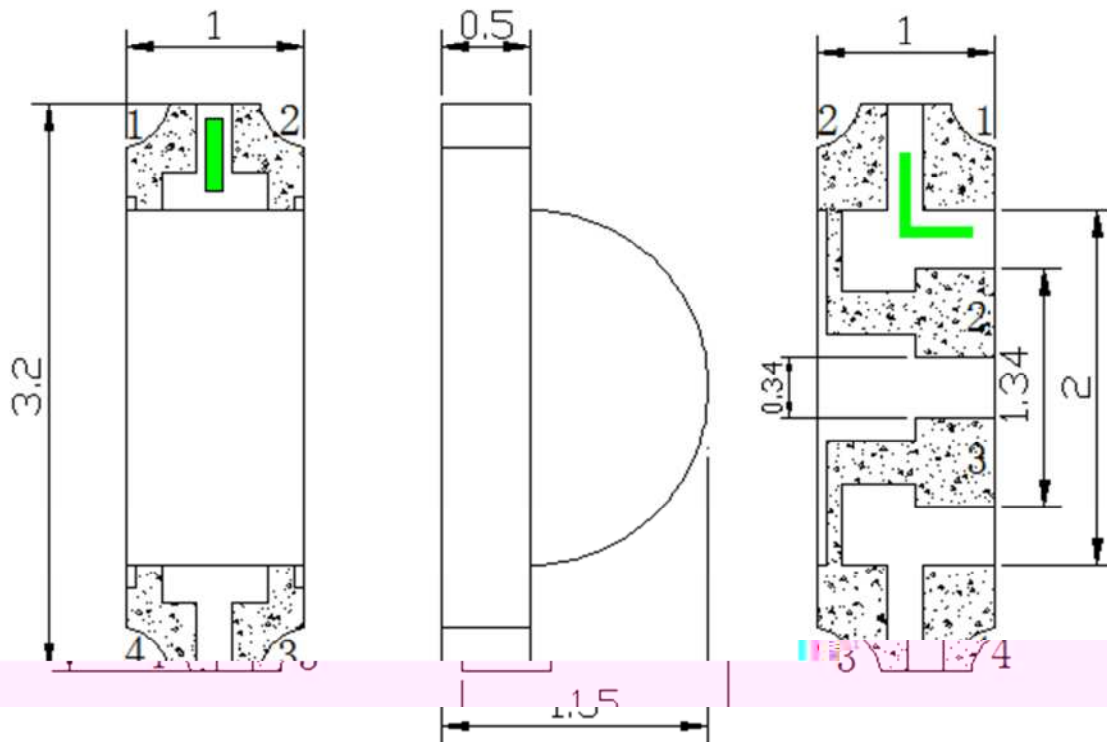




### Features

- ◆ Pb free product—RoHS compliant
- ◆ Low power consumption, High efficiency
- ◆ Reliable and rugged
- ◆ High luminous intensity
- ◆ Long life – solid state reliability
- ◆ Viewing angle: 120°(R/G/B)

### Package Dimension



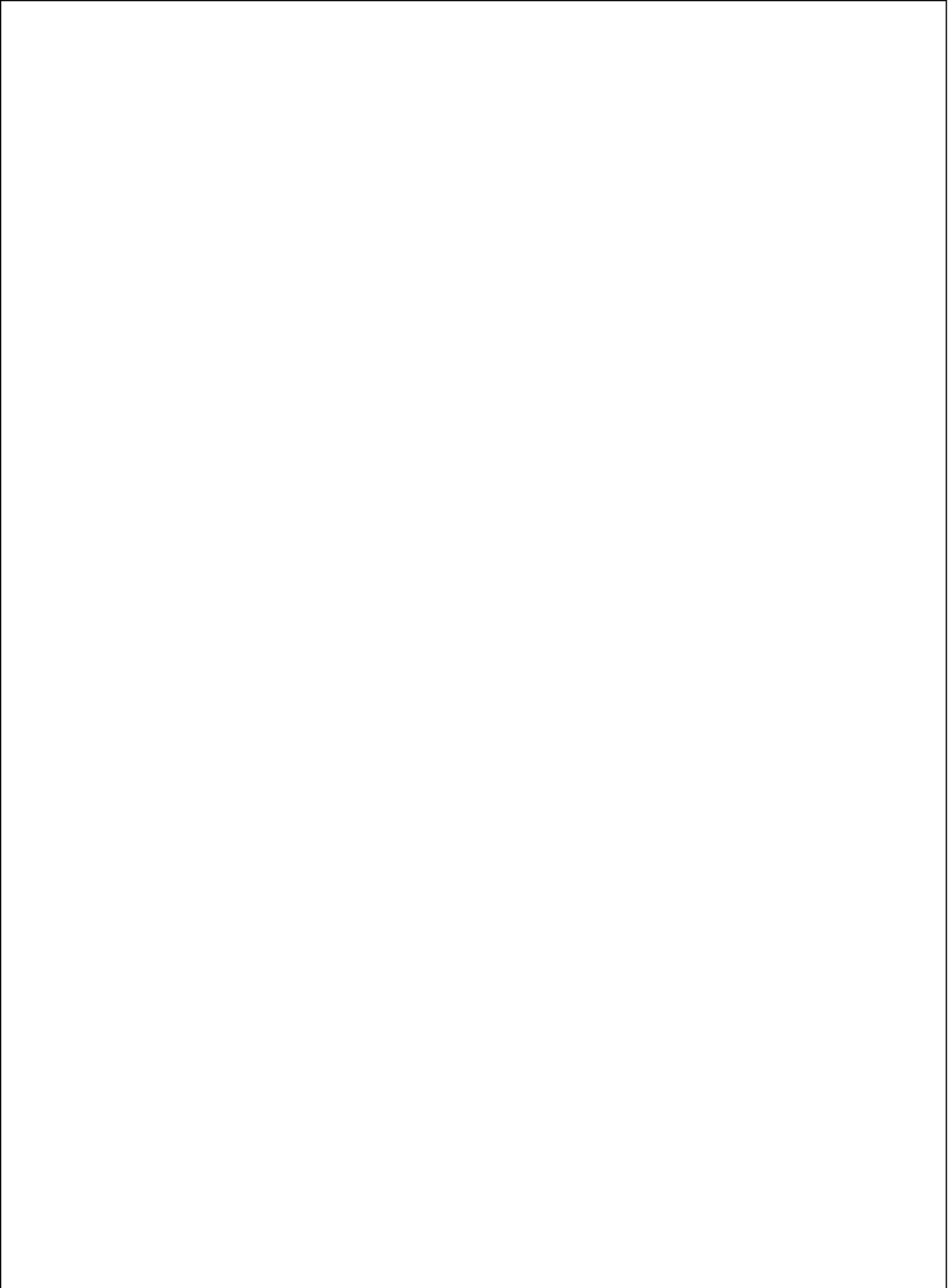
Part NO.	Lens Color	Source Color
SL-T3210RGBC020-L150	Water Clear	Red/Green/Blue

#### Notes:

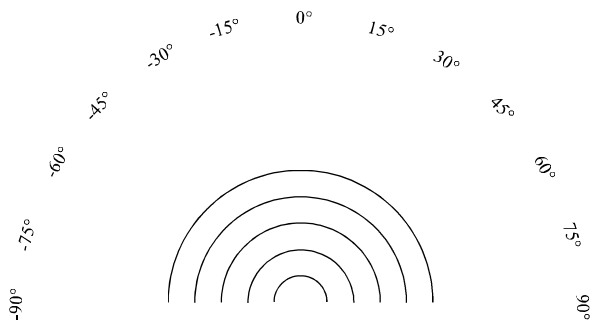
1. All dimensions are in millimeters.
2. Tolerance is  $\pm 0.10\text{mm}$  unless otherwise noted.
3. Specifications are subject to change without notice.

## Absolute Maximum Ratings at Ta=25


LIGH



## Typical Electrical / Optical Characteristics Curves (25 Ambient Temperature Unless Otherwise Noted)



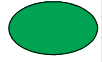
# LIGHT



## LIGHT

Light Electronics CO., LTD.

Light Electronics CO., LTD.



MODEL NAME: \_\_\_\_\_  
QUANTITY: \_\_\_\_\_  
BIN: \_\_\_\_\_  
PACKING DATE: \_\_\_\_\_  
REMARKS: \_\_\_\_\_

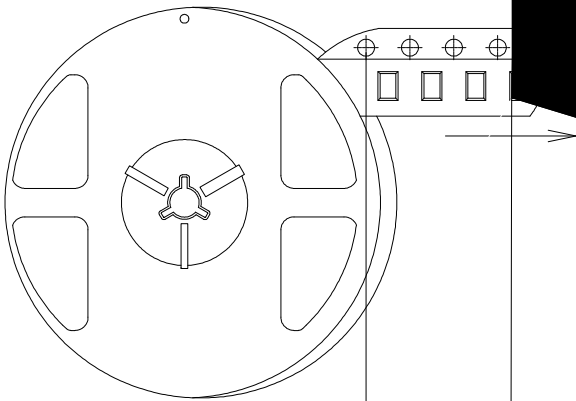
\_\_\_\_\_

\_\_\_\_\_

\_\_\_\_\_

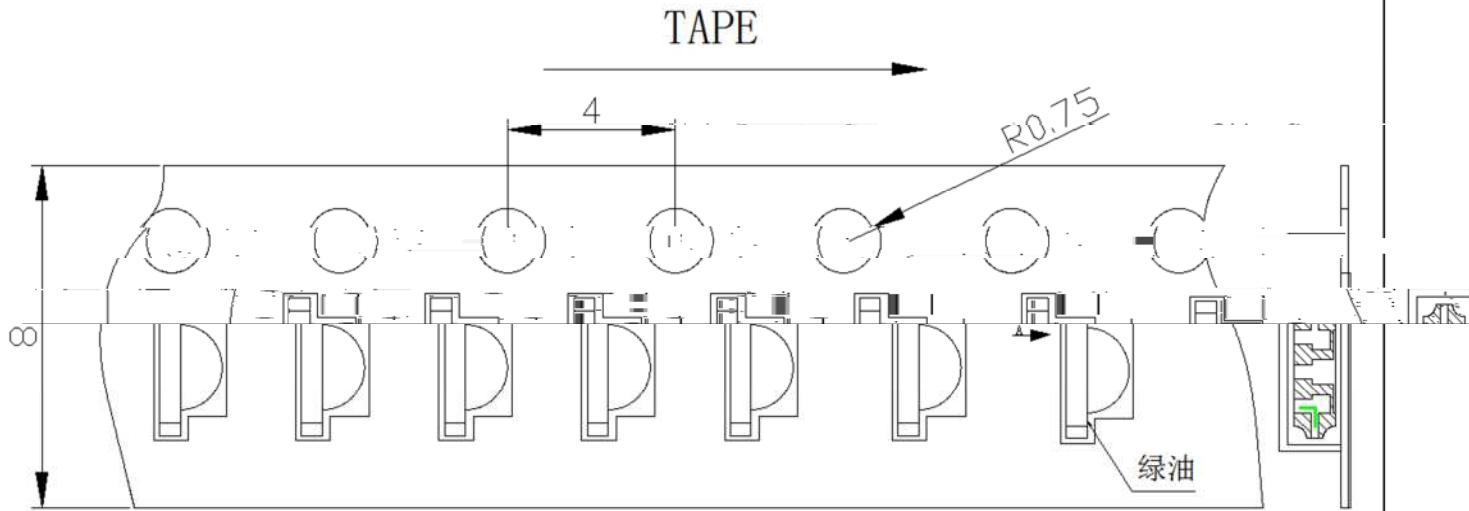
\_\_\_\_\_

LOT NO. : \_\_\_\_\_

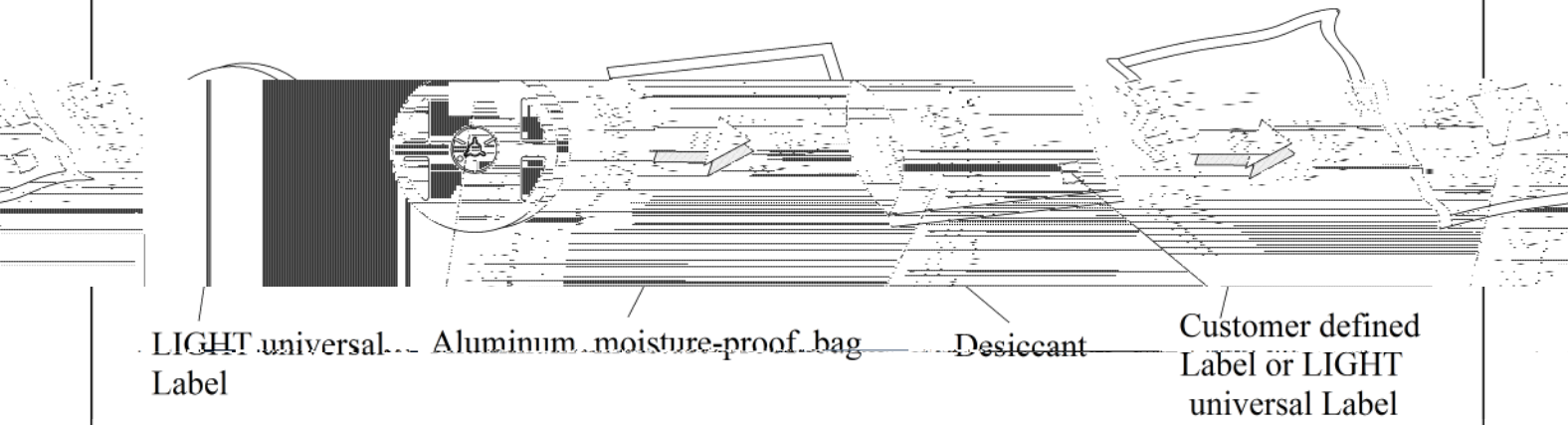


**Note:**

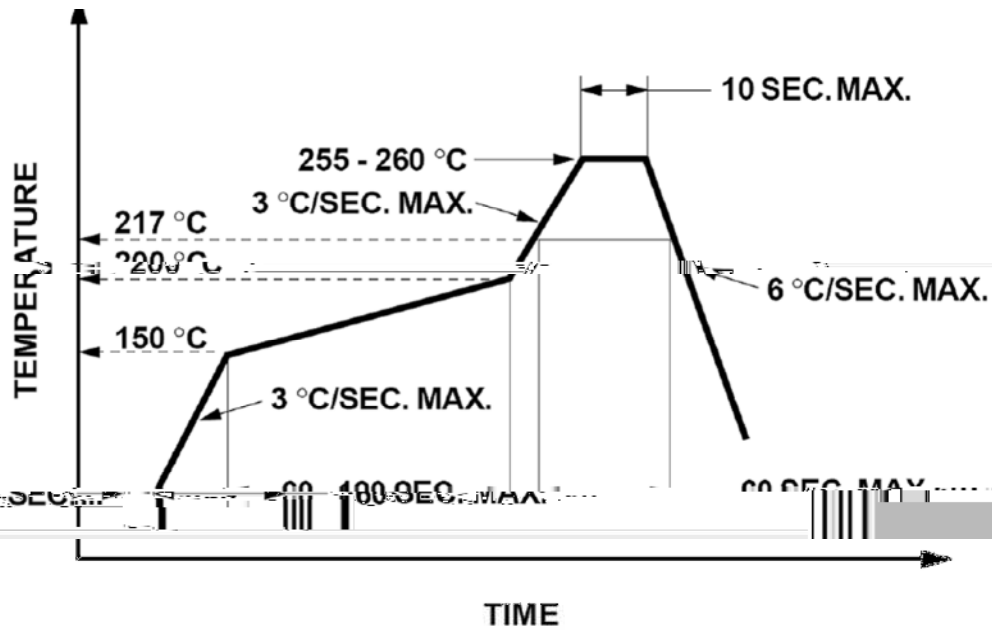
**Carrier Tape Specifications(Loaded Quantity: 3000pcs/reel)**



**Moisture Resistant Packaging**



## Suggest IR Reflow Condition For Lead Free



1. Reflow soldering should not be done more than two times.
2. When soldering, do not put stress on the LEDs during heating.

## Soldering iron...

1. When hand soldering, the temperature of the iron must less than 300°C for 3 seconds.
2. The hand solder should be done only once.

## Repairing

Repair should not be done after the LEDs have been soldered. When repairing is unavoidable, a double-head soldering iron should be used (as below figure). It should be confirmed beforehand whether the characteristics of LEDs will or will not be damaged by repairing.

