

LG-T1921RGBA-TD-AL



LG-T1921RGBA-TD-AL

TOP Full-color LED

Catalogue

Electrical Characteristics3

Typical Characteristics TD4764(i56 T 04 76 c 77.52 0.6 17rvew 9 0 0 34.25 TD[...2.731] GBA17 0.0 10

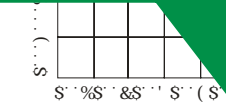
3

3

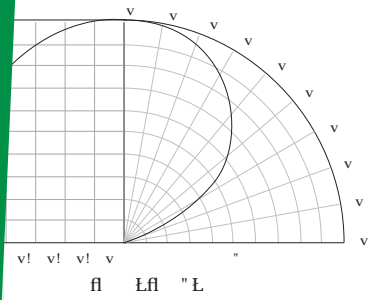
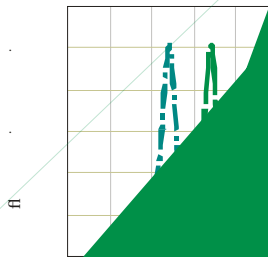
Typical

T_{Ambient} 125

f₁ f₂ f₃ f₄ f₅ f₆ f₇ f₈ f₉ f₁₀ f₁₁ f₁₂ f₁₃ f₁₄ f₁₅ f₁₆ f₁₇ f₁₈ f₁₉ f₂₀ f₂₁ f₂₂ f₂₃ f₂₄ f₂₅ f₂₆ f₂₇ f₂₈ f₂₉ f₃₀ f₃₁ f₃₂ f₃₃ f₃₄ f₃₅ f₃₆ f₃₇ f₃₈ f₃₉ f₄₀ f₄₁ f₄₂ f₄₃ f₄₄ f₄₅ f₄₆ f₄₇ f₄₈ f₄₉ f₅₀ f₅₁ f₅₂ f₅₃ f₅₄ f₅₅ f₅₆ f₅₇ f₅₈ f₅₉ f₆₀ f₆₁ f₆₂ f₆₃ f₆₄ f₆₅ f₆₆ f₆₇ f₆₈ f₆₉ f₇₀ f₇₁ f₇₂ f₇₃ f₇₄ f₇₅ f₇₆ f₇₇ f₇₈ f₇₉ f₈₀ f₈₁ f₈₂ f₈₃ f₈₄ f₈₅ f₈₆ f₈₇ f₈₈ f₈₉ f₉₀ f₉₁ f₉₂ f₉₃ f₉₄ f₉₅ f₉₆ f₉₇ f₉₈ f₉₉ f₁₀₀



U_i (V)



Reliability Test Items And Conditions

| 实验项目 | 参考标准 | 实验条件 | 时间 | 样品数 | 判据 |
|------|------|------|----|-----|----|
| | | ↔ | | | |
| | | | | | |
| | | | | | |
| | | | | | |
| | | | | | |
| | | | | | |
| | | | | | |
| | | | | | |
| | | | | | |

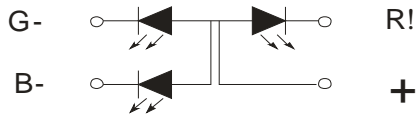
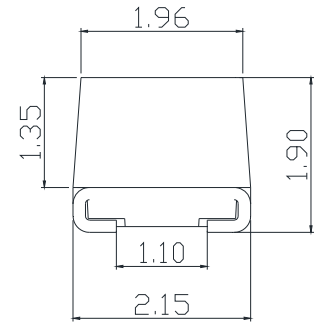
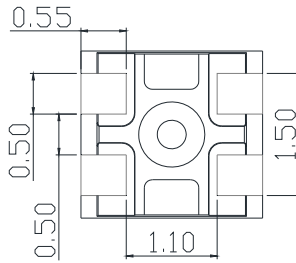
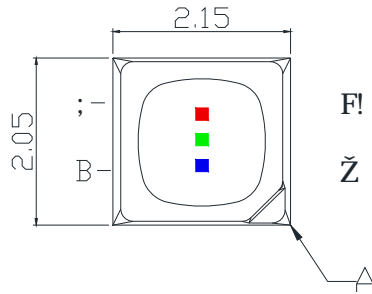
Criteria For Judging Damage

| 测试项目 | 符号 | 测试条件 | 判定标准 |
|------|----|------|--------|
| | | | |
| | | | μ |
| | | | ≧ ≦ |
| | | | |

Product design and operational recommendation

1 mm

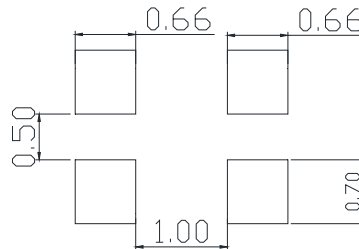
Product design Unit: mm



w w w

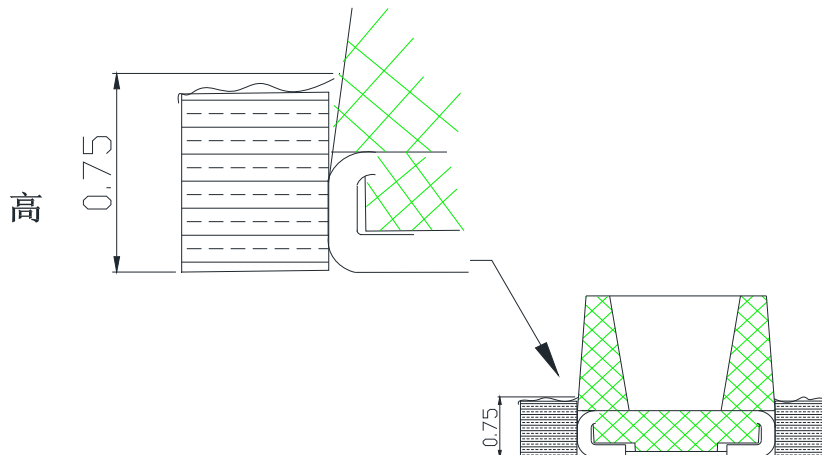
2 mm

Recommended soldering pad (Unit: mm)



3 0.75mm

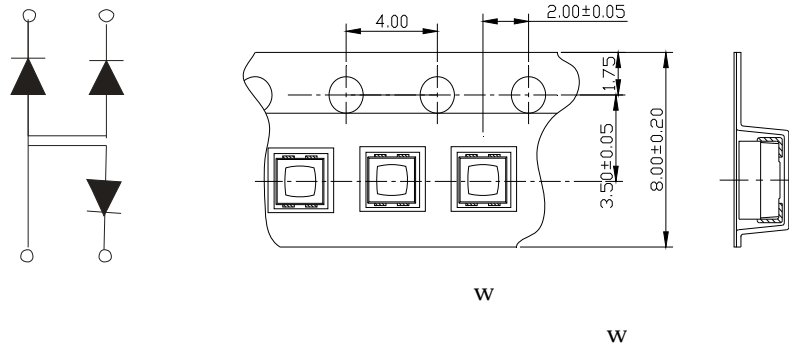
Recommendation for glue filling: filling height must be higher than or equal to 0.75mm



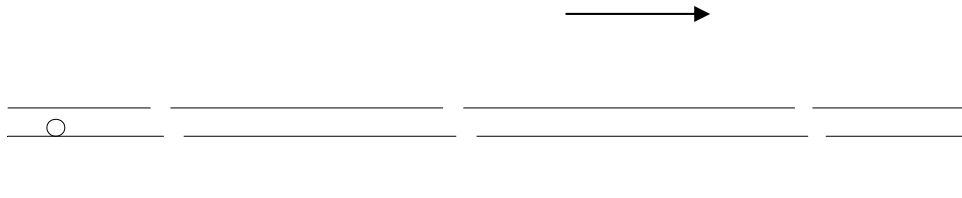
1

Packaging (1)

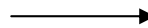
Carrier Tape



Details Of Carrier Tape

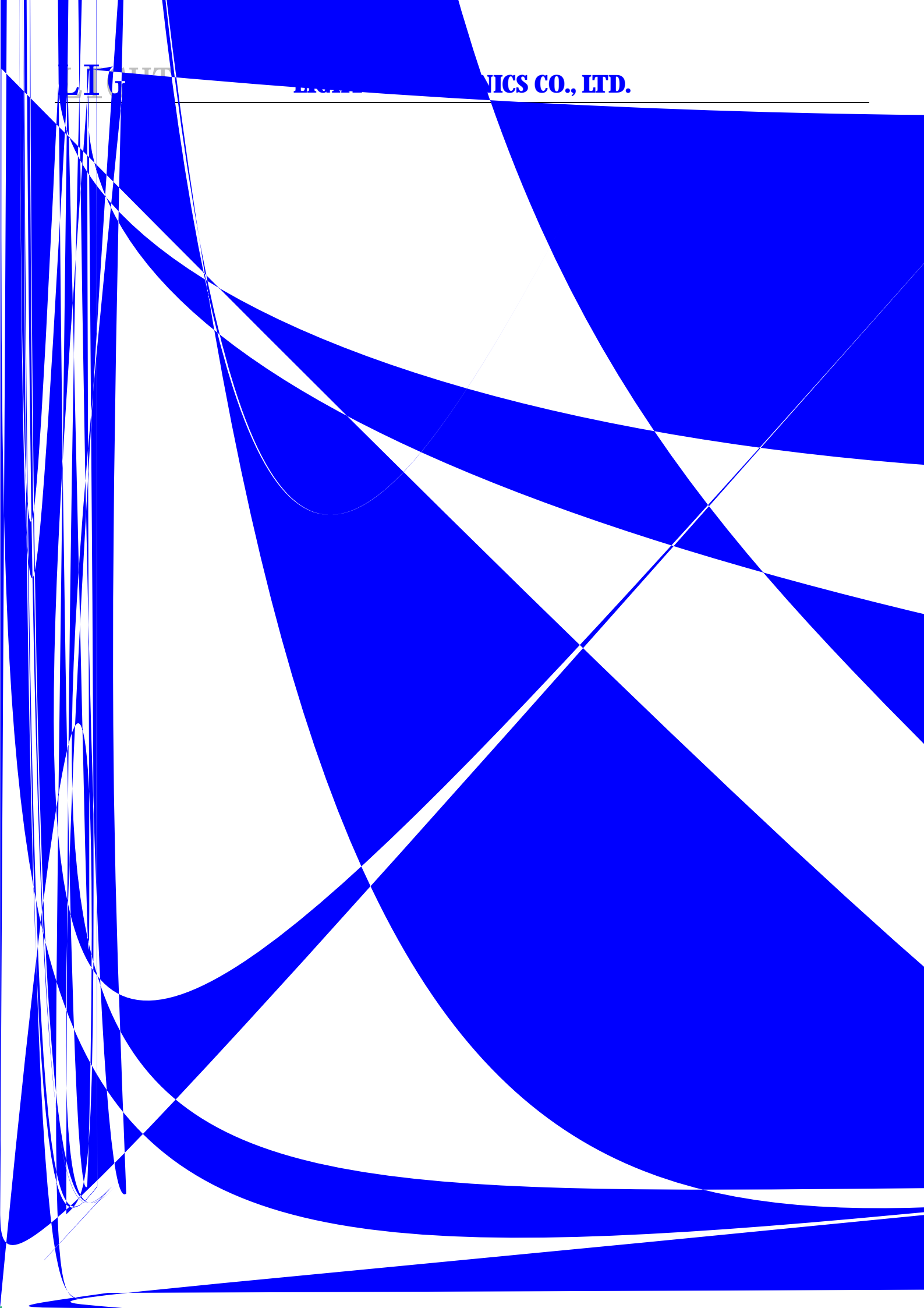


Reel Dimension



LIGHT

LIGHT ELECTRONICS CO., LTD.



2

Guideline for Soldering (2)

- x .
- x .
- x .
- x .
- x .

(2)

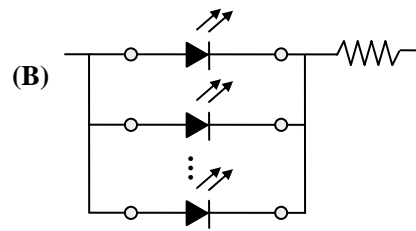
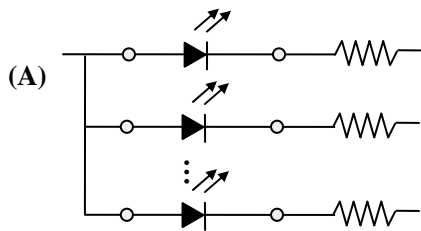
Precautions (2)

3.

Design Consideration

-

-



-

4.

Reverse voltage protection

-

